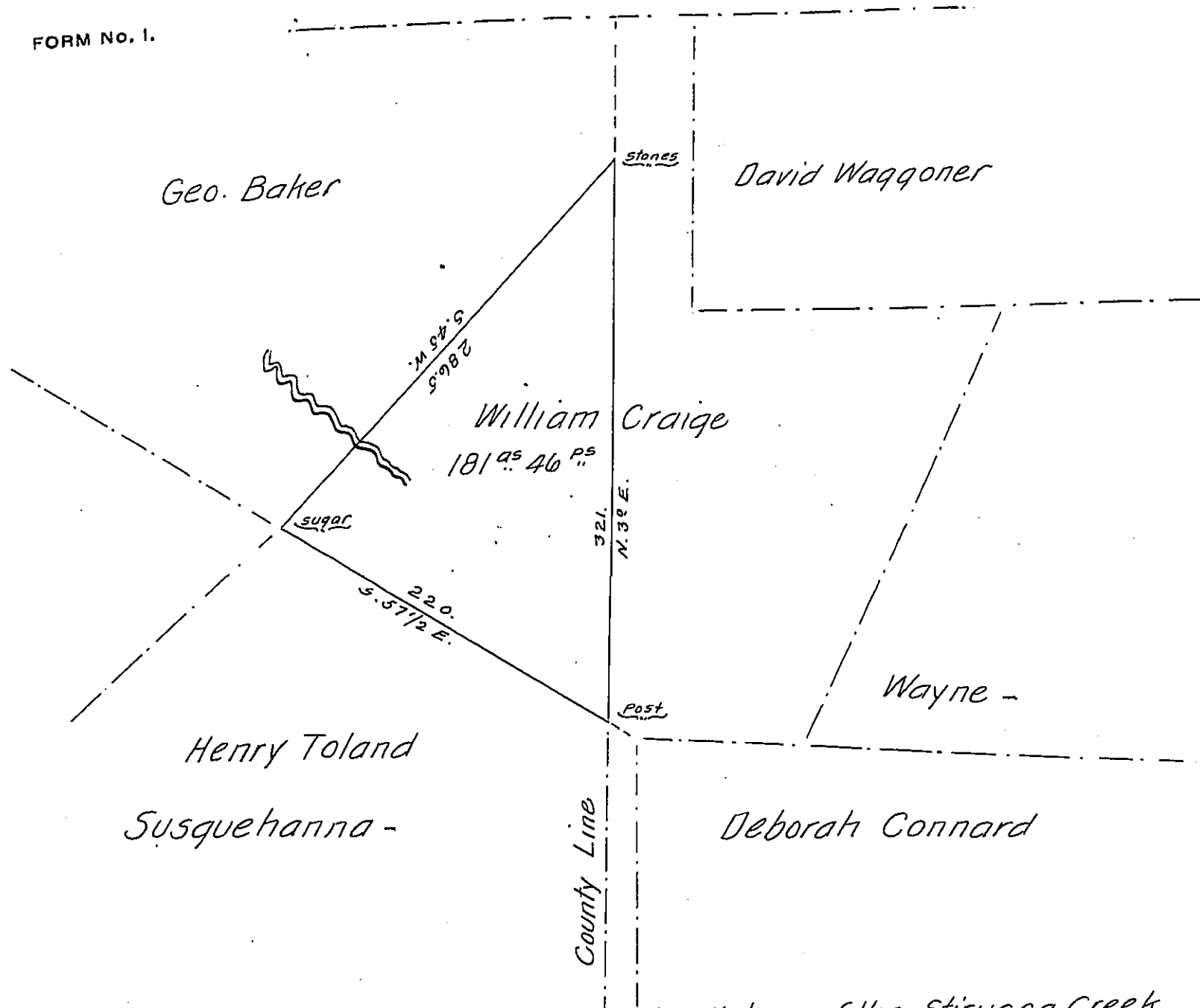


FORM NO. 1.



Draught of a tract of land situate near the Waters of the Stirucca Creek adjoining lands surveyed to Henry Toland and others in Harmony township Susquehanna County. Surveyed on the 19th day of May A.D. 1849. for William Craige in pursuance of a Warrant dated the 17th day of February A.D. 1794. Containing One hundred and eighty one acres and forty six perches, with allowance of six pr. Cent for roads &c.

To John Laporte Esq. }
 Surveyor General } O. S. Beebe D. S.

IN TESTIMONY that the above is a copy of the original remaining on file in the Department of Internal Affairs of Pennsylvania, made conformably to an Act of Assembly approved the 16th day of February, 1833, I have hereunto set my Hand and caused the Seal of said Department to be affixed at Harrisburg, this third day of March 1908.

Henry Howck
 Secretary of Internal Affairs.